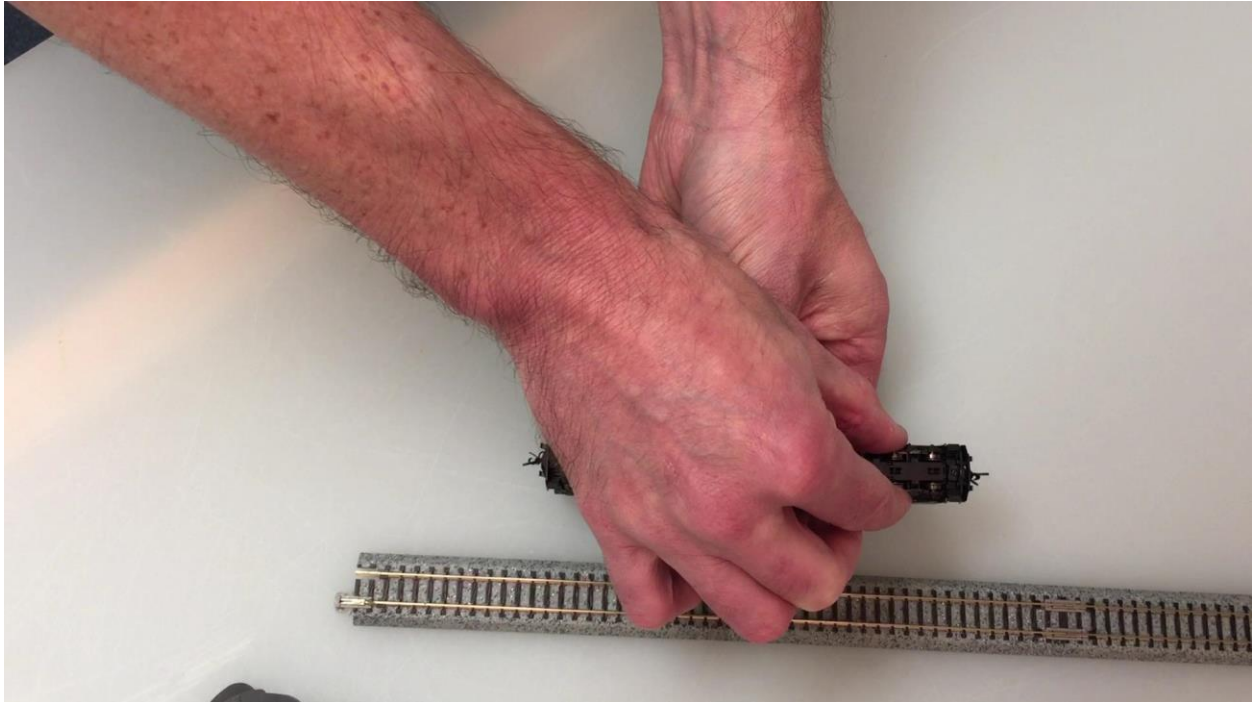


N Scale AC6000 Shell Removal

Step 1: Remove the trucks (just pull away from the chassis – no screws to remove).



Step 2: Remove the couplers on either end (1 small Philips head screw to remove for each coupler).



Step 3: Remove the radiator cooling fan grill (just one tab at the front of the grill, lift the rear up and off).



Step 4: Push down on the chassis while pulling up under the steps on the rear of the engine.



Step 5: Grasp the engine by the fuel tank, and push up on the underside of the steps on the front of the engine.



Step 6: Lift the shell away from the chassis, be aware of the cab light wires and do not pull it too far away.

